

Aerial photography Plane

RCFlightcontrol

Free Plans

Assembly Instructions:

Make two of the front parts

Two of the wings

Use a carbon rod to attach the front to the end of the plane by the rudder and elevator.

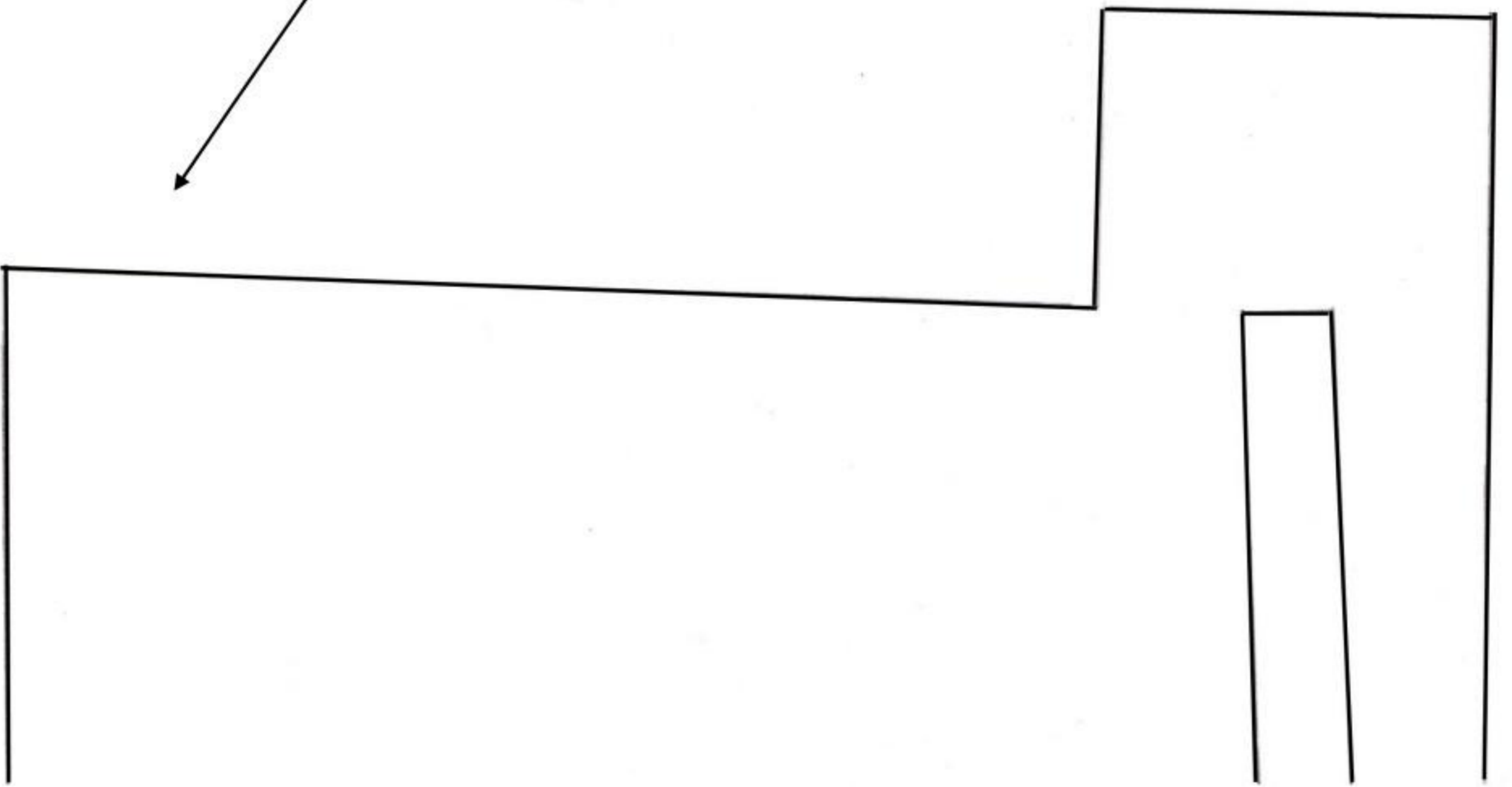
There is no ailerons on this plane.

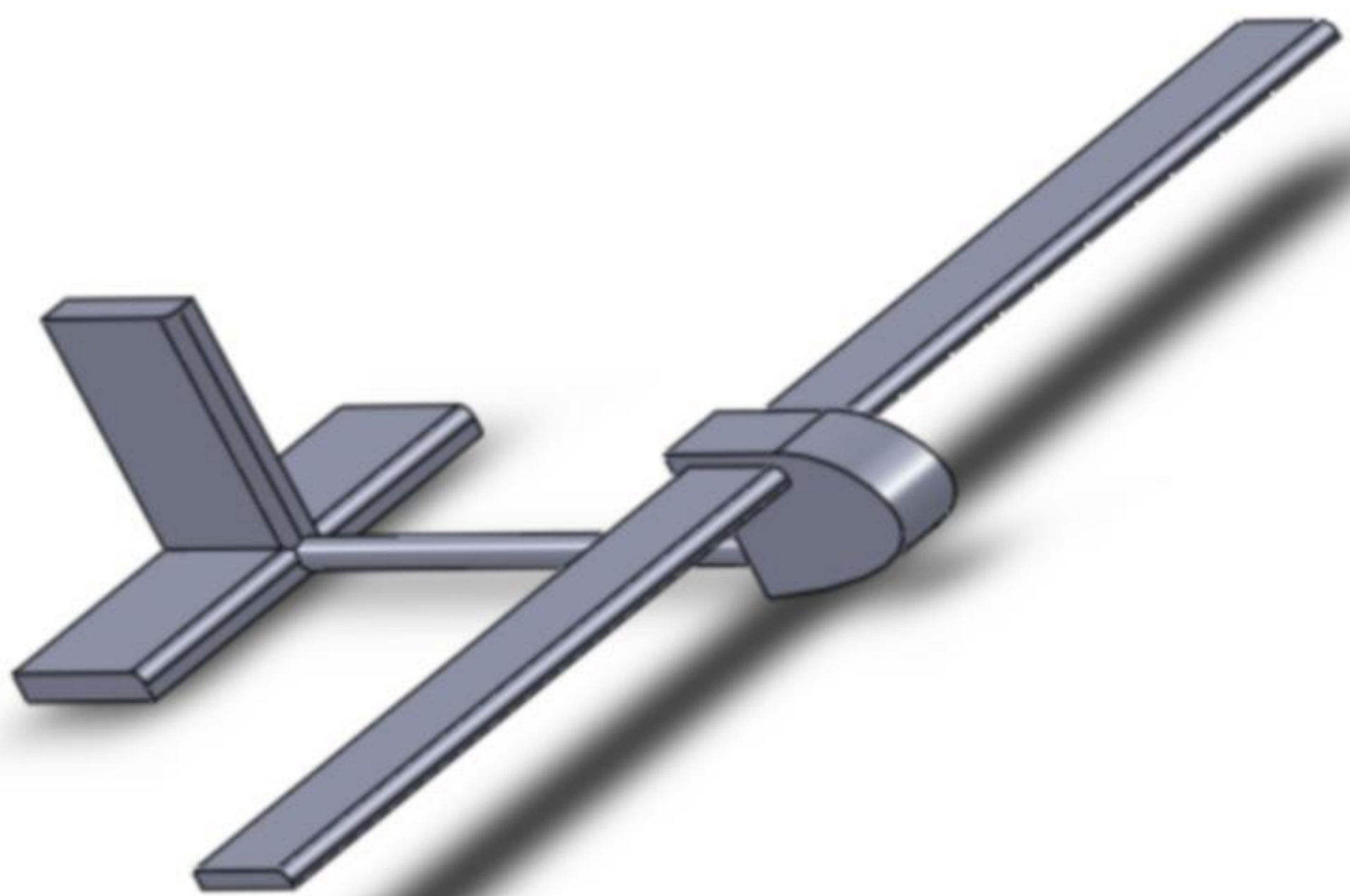
Under the area for the motor I am using that as a door to hold the receiver battery and ESC.

Put the servos along the carbon rod

Good luck share your build pictures or videos on Rcplaneplace.tk

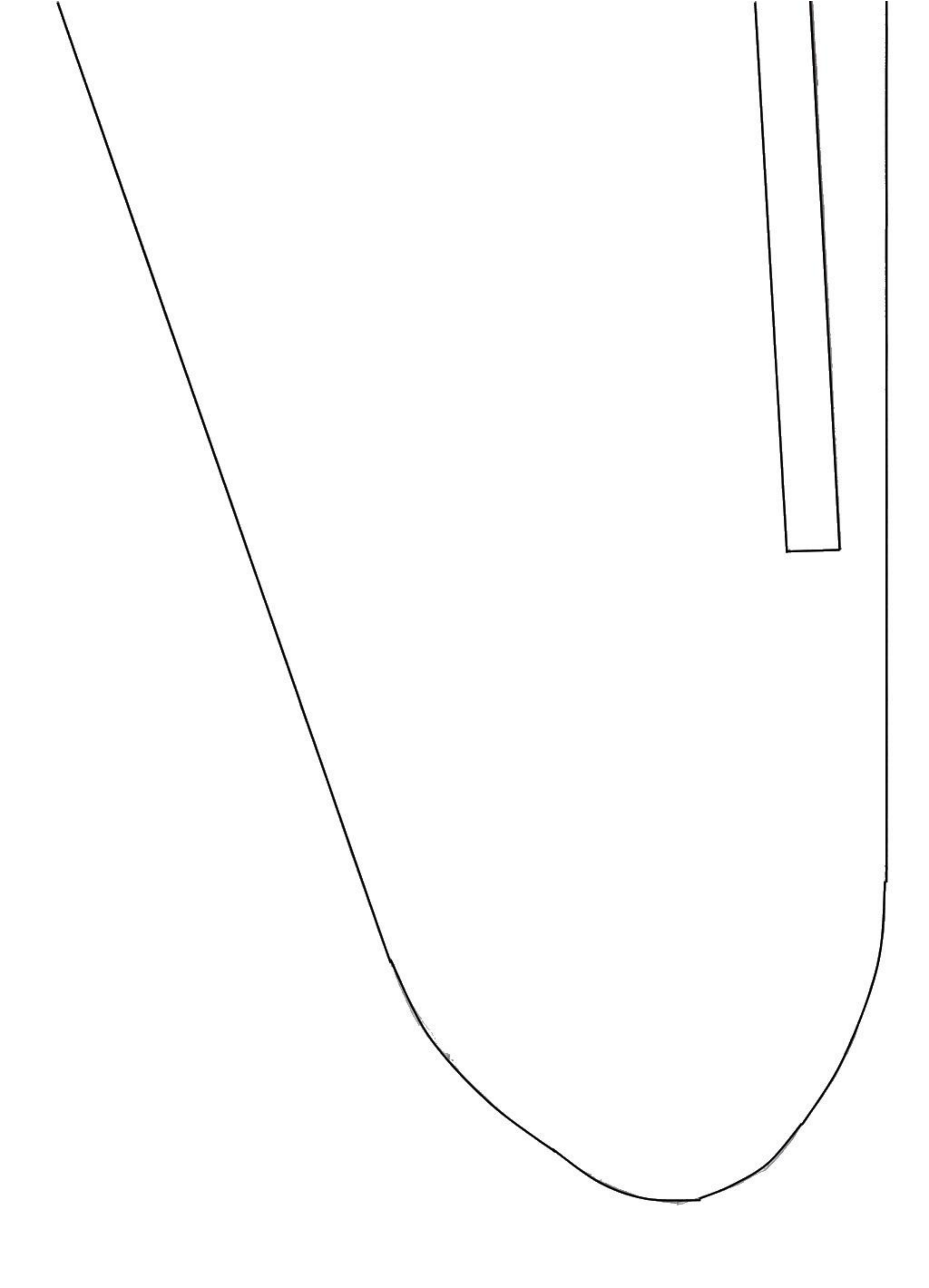
insert carbon rod here

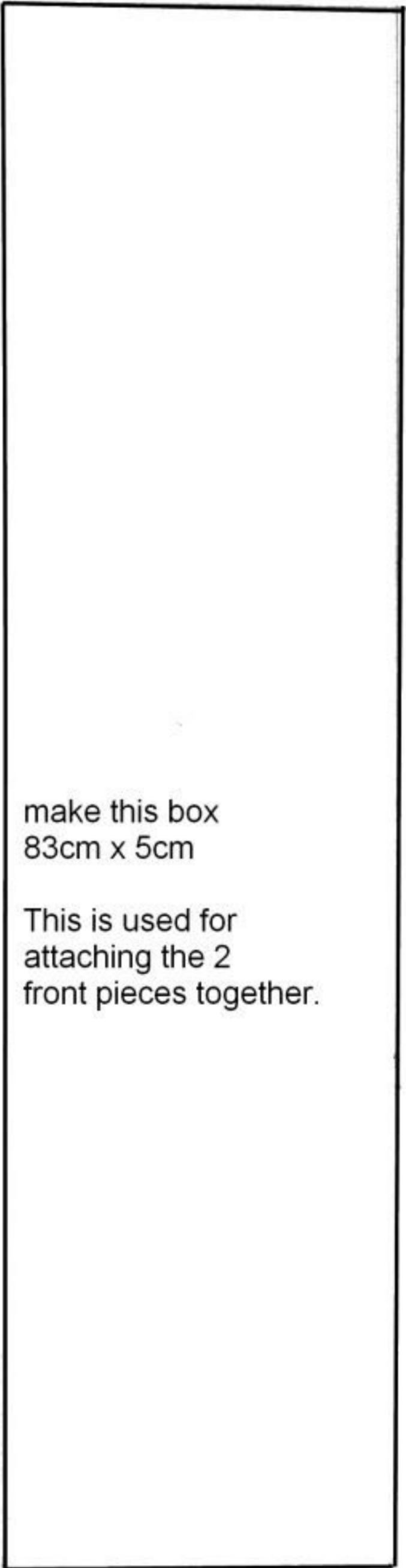




--	--

--	--





make this box
83cm x 5cm

This is used for
attaching the 2
front pieces together.



